

# instruction manual

Solo 11, 16 & 16 Plus series  
Surface Mounted  
Constant Current

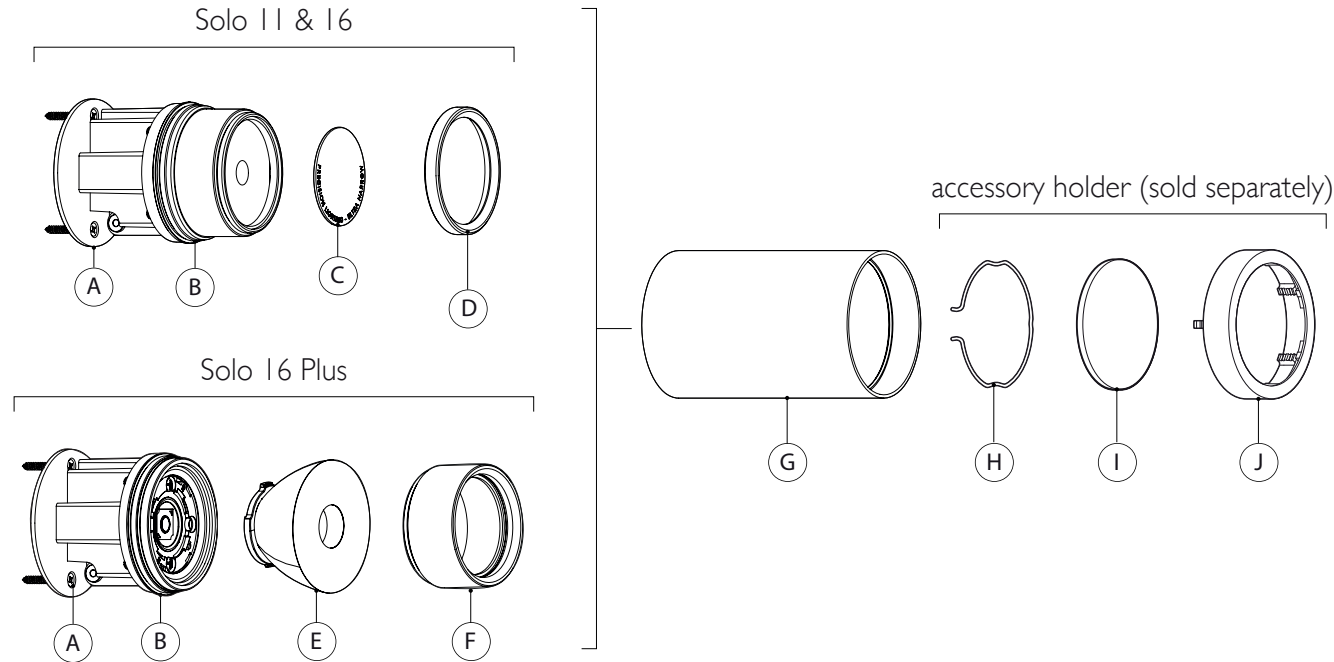
Solo 11	4.2W	405lm
Solo 16	8.4W	700lm
Solo 16 Plus	12.6W	1245lm

These instructions cover procedures for all surface mounted versions of Solo 11, 16 & 16 Plus series.



## KEY PRODUCT FEATURES

A	2 x Screws	F	Optic Cap
B	Luminaire Body	G	Snoot
C	Microlens	H	Accessory (up to 2)
D	Microlens Cap	I	Accessory Clip
E	Optic	J	Double Accessory Holder



## IMPORTANT SAFETY INFORMATION

READ ALL INSTRUCTIONS BEFORE USING THESE PRODUCTS. SAVE THESE INSTRUCTIONS FOR LATER REFERENCE.

1. All systems must be installed by a suitably qualified professional only. Installations must conform to national installation and accident prevention regulations.
2. Do not install any fixture closer than 150mm from any combustible material. Do not install these products in a damp or wet location.
3. To reduce the risk of fire and burns, do not install these products where exposed bare conductors can be shorted or contact any conductive materials. Do not conceal or extend exposed conductors through a building wall.
4. Ensure all connections are tight. Bad connections can cause overheating, arcing and a potential fire risk.
5. Always use appropriate optics and ensure they are fitted securely.
6. Use only as described in this Precision Lighting manual.
7. Use only Precision Lighting recommended accessories.
8. Ensure that the luminaire is switched off at mains supply before installing or removing.
9. Luminaires may be extremely hot, allow to cool before touching.
10. These are LED luminaires, they must be connected to an appropriate PSU.
11. Regular cleaning of these products is important. Switch off at mains supply and allow to cool before touching. Clean fittings with a soft damp cloth and allow to dry before reconnecting power supply

precision  
by luminii

42 RIVERSIDE ROAD | LONDON | SW17 0BA | UK  
t. +44 (0) 20 8947 6616 | sales@precisionlighting.co.uk  
www.precisionlighting.co.uk  
© 2023 Precision Lighting Ltd. We reserve the right to change details of design, materials and finish.  
Version 10.23

## instruction manual

Solo 11 / 16 / 16 Plus Surface  
Electrical Installation  
350mA (11 series) or 700mA  
(16 series) Constant Current  
Driver.

### WARNING

Do not exceed maximum number of  
luminaires per driver wattage rating, see  
driver datasheet for details.

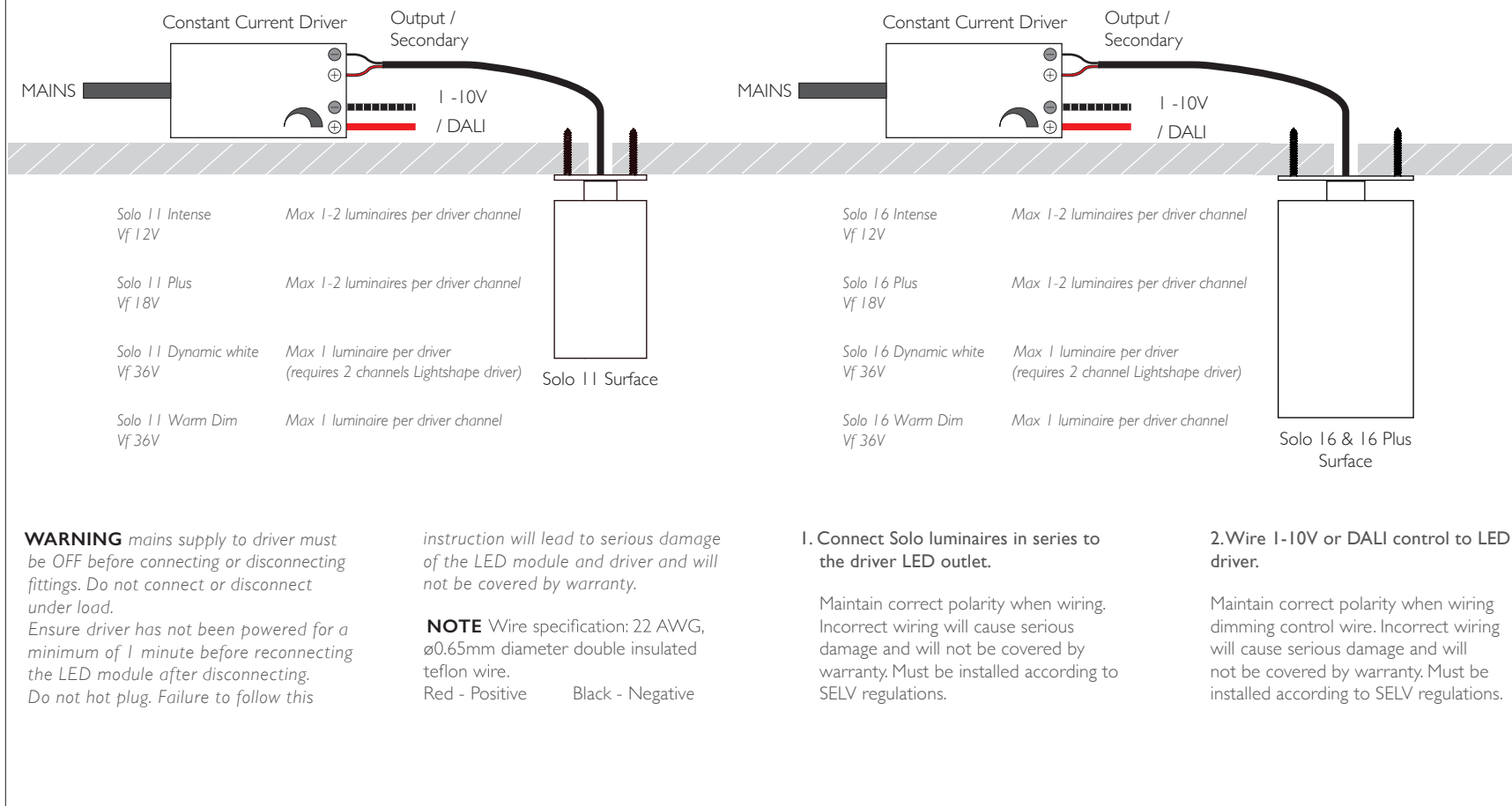
Remote access required for driver.

These instructions are applicable to all  
luminaires including:

Solo 11 - Surface

Solo 16 - Surface

Solo 16 Plus - Surface



## IMPORTANT SAFETY INFORMATION

READ ALL INSTRUCTIONS BEFORE USING THESE PRODUCTS. SAVE THESE INSTRUCTIONS FOR LATER REFERENCE.

- All systems must be installed by a suitably qualified professional only. Installations must conform to national installation and accident prevention regulations.
- Ensure that the luminaire is switched off at mains supply before installing or removing.
- Do not install these systems in a damp or wet location, IP20 environments only. Do not install any fixture closer than 150mm (6 inches) from any combustible material.
- To reduce the risk of fire and burns, do not install these systems where exposed bare conductors can be shorted or contact any conductive materials. Do not conceal or extend exposed conductors through a building wall.
- Ensure all connections are tight. Bad connections can cause overheating, arcing and a potential fire risk.
- Wire supply connections must be made with U.L. or compatible testing agency-approved connectors. Always use appropriate optics and ensure they are fitted securely.
- Install and use only as described in this Precision Lighting manual.
- Use Precision Lighting recommended optics and accessories only.
- Luminaires may be hot, allow to cool before touching.
- Access to serviceable electrical components should be kept available for maintenance purposes.
- Regular cleaning of these products is important. Switch off at mains supply and allow to cool before touching. Clean fittings with a microfibre cloth. Then reconnect the power supply.

precision  
by luminii

42 RIVERSIDE ROAD | LONDON | SW17 0BA | UK  
t. +44 (0) 20 8947 6616 | sales@precisionlighting.co.uk  
www.precisionlighting.co.uk  
© 2023 Precision Lighting Ltd. We reserve the right to  
change details of design, materials and finish.  
Version 10.23

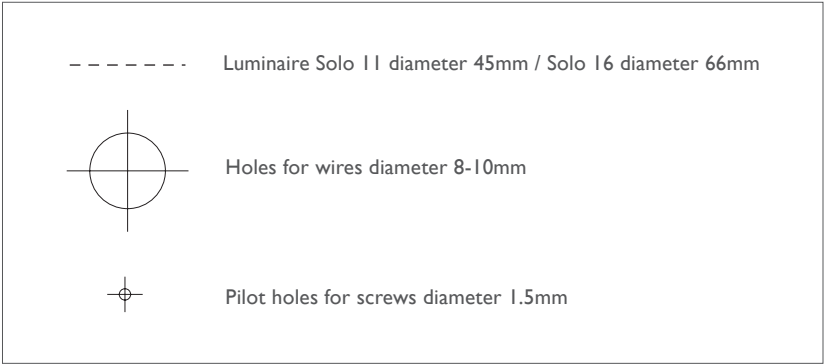
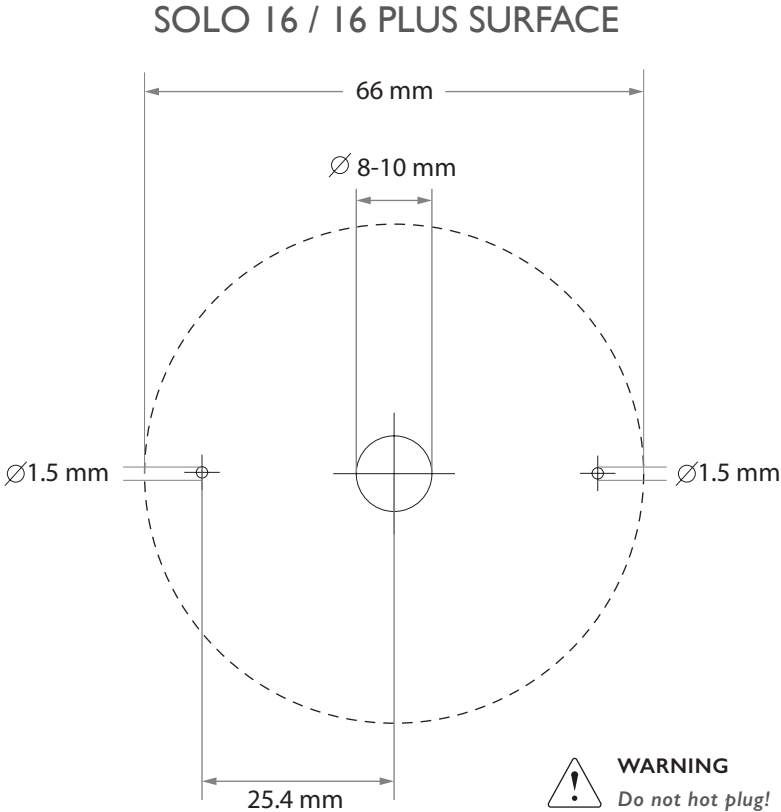
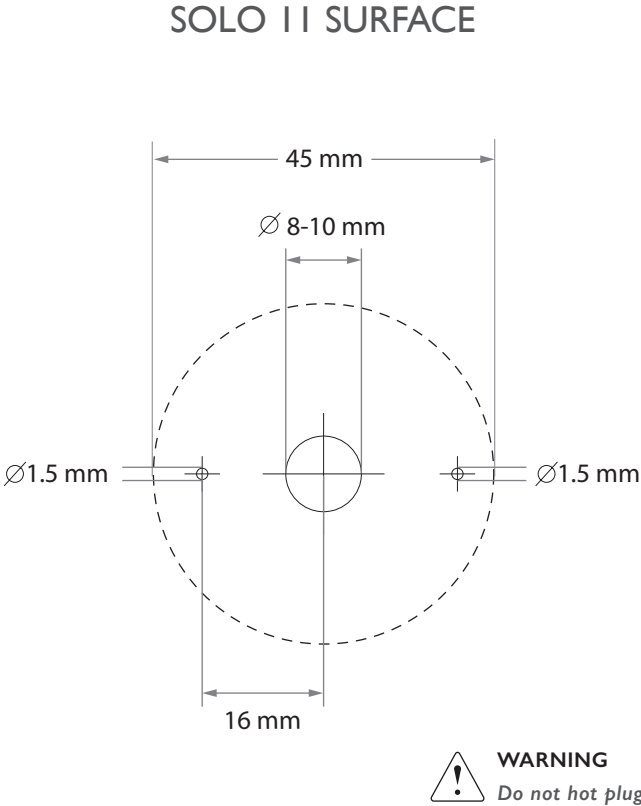
Drilling pilot holes and wiring holes

**WARNING** switch off power to mains before installation.

**WARNING** Do not hot plug!

Drill wiring holes for power cable ø 8-10mm.

Drill 2 pilot holes ø1.5mm for screws.

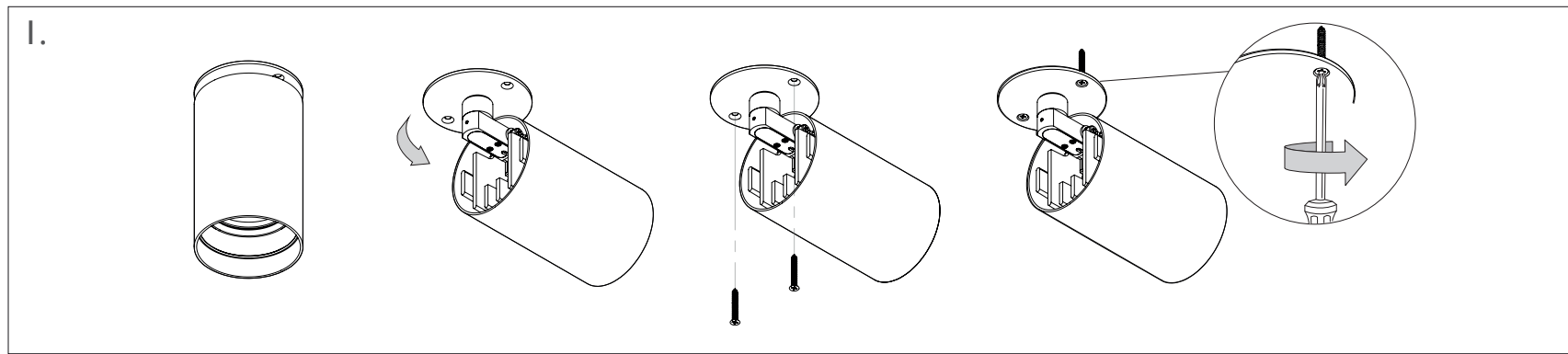


**NOTE** Model shown is the Solo 16 LED.  
The same procedures apply for Solo 11  
LED.

### 1. Installing the luminaire

Drill the pilot holes and the wiring hole  
(See drilling template).

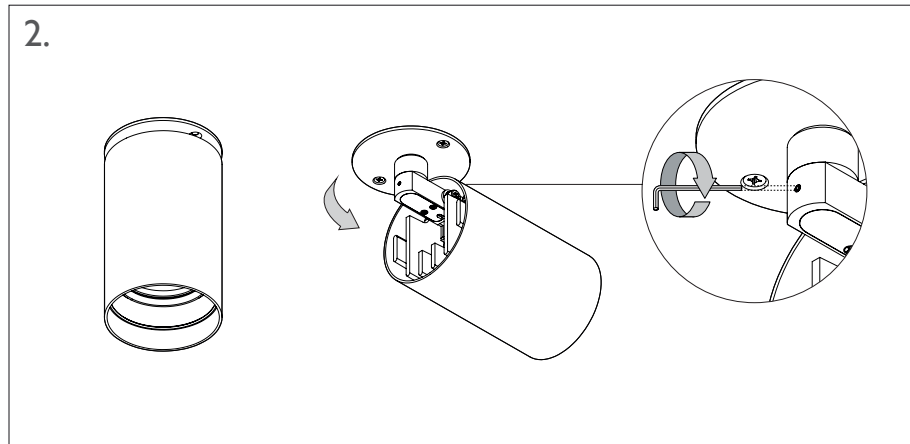
Tilt luminaire 90 degrees to expose holes  
for screws. Use a screwdriver to tighten  
screws into place.



### 2. Locking Pan

**NOTE** Only adjust luminaire position  
when unlocked.

Tilt luminaire 90 degrees to expose pan  
hole. Adjust luminaire to desired pan  
position. To lock into place, insert hex key  
provided into pan hole then rotate hex  
key clockwise.

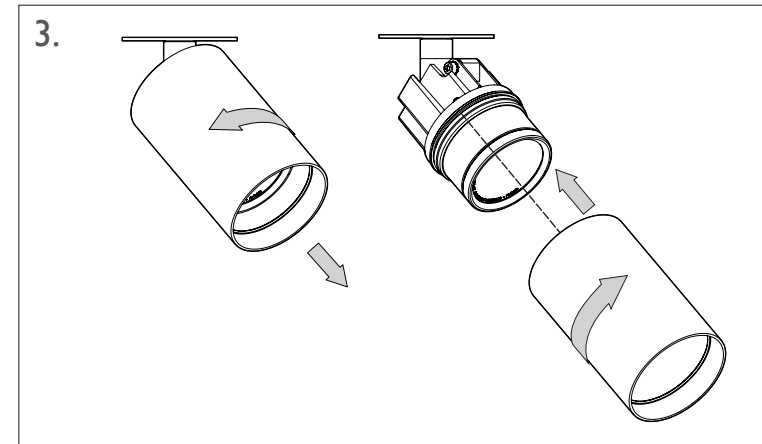


### 3. Removing and changing the snoot

**CAUTION** the luminaire may be  
extremely hot. Allow to cool before  
touching.

Unscrew snoot anti-clockwise to remove.

To reattach snoot, align snoot with thread  
and screw on clockwise until it stops and  
is secure.



precision  
by luminii

42 RIVERSIDE ROAD | LONDON | SW17 0BA | UK  
t. +44 (0) 20 8947 6616 | sales@precisionlighting.co.uk  
www.precisionlighting.co.uk  
© 2023 Precision Lighting Ltd. We reserve the right to  
change details of design, materials and finish.  
Version 10.23

#### 4. Changing beam angle

##### 4A) Changing the microlens

**NOTE** Only applies to Solo 11 & 16 series

Follow step 2 to remove the snoot.

Unscrew the microlens cap anti-clockwise until fully detached.

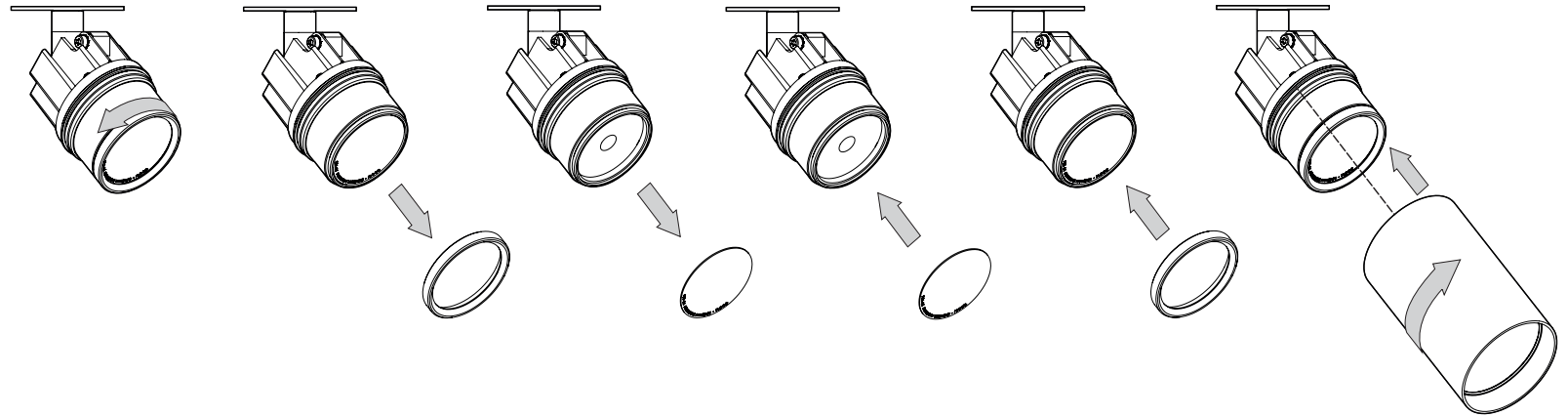
Remove the microlens and replace with alternative microlens ensuring it is installed flat.

**NOTE** Ensure the microlens is inserted with smooth side / text facing outwards, and text is legible.

Reattach microlens cap, screw clockwise until it stops and is tight and secure.

Reattach snoot, screw on clockwise until it stops and is secure.

4A).



##### 4B) Changing the optic

**NOTE** Only applies to Solo 16 Plus series

Follow step 2 to remove the snoot.

Unscrew the Optic cap anti-clockwise until fully detached.

Gently quarter turn the optic anti-clockwise and remove.

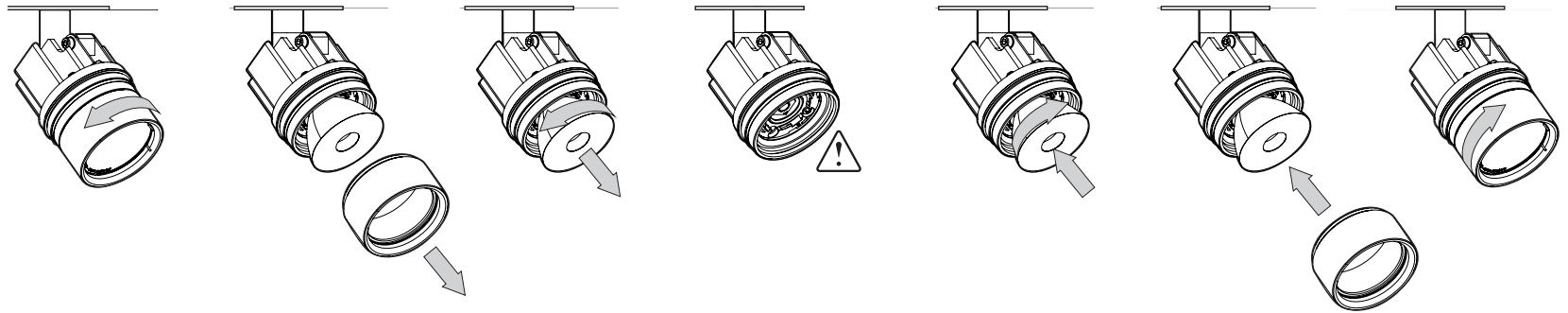
**NOTE** Do not touch the exposed LED

Carefully place optic on to LED and gently quarter turn clockwise to lock it into place.

Reattach Optic Cap, screw on clockwise until it stops and is secure.

Reattach Snoot, screw on clockwise until it stops and is secure.

4B).



precision  
by luminii

42 RIVERSIDE ROAD | LONDON | SW17 0BA | UK  
t. +44 (0) 20 8947 6616 | sales@precisionlighting.co.uk  
www.precisionlighting.co.uk

© 2023 Precision Lighting Ltd. We reserve the right to  
change details of design, materials and finish.  
Version 10.23

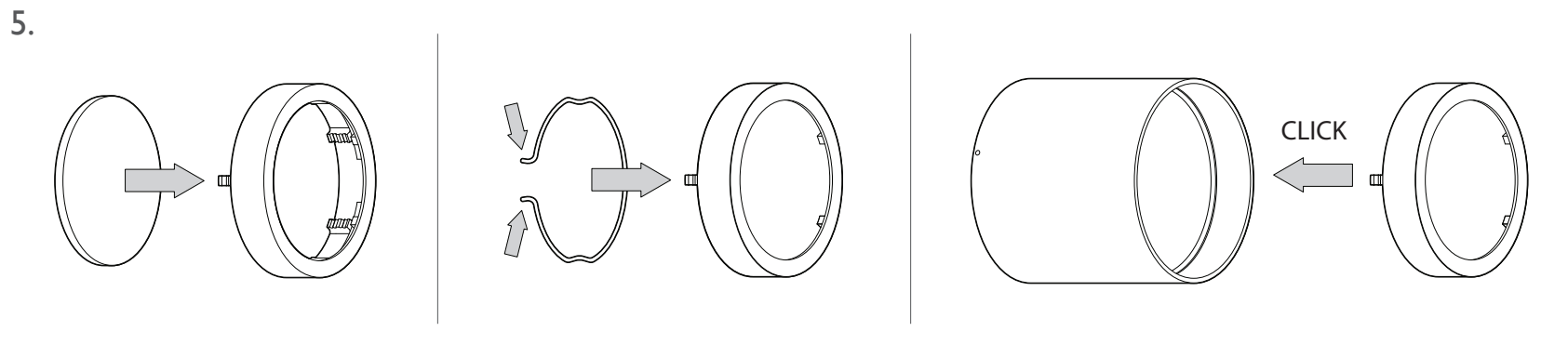
## 5. Installing accessories using the accessory holder

**NOTE** Accessory holder fits up to 2 accessories.

Place accessory inside accessory holder and ensure it is flat.

Pinch ends of the retaining clip and insert into accessory holder to secure accessory in place.

Insert accessory holder into snoot until it clicks into place.



## 6. Changing accessories using the accessory holder

Accessory holder fits up to 2 accessories.

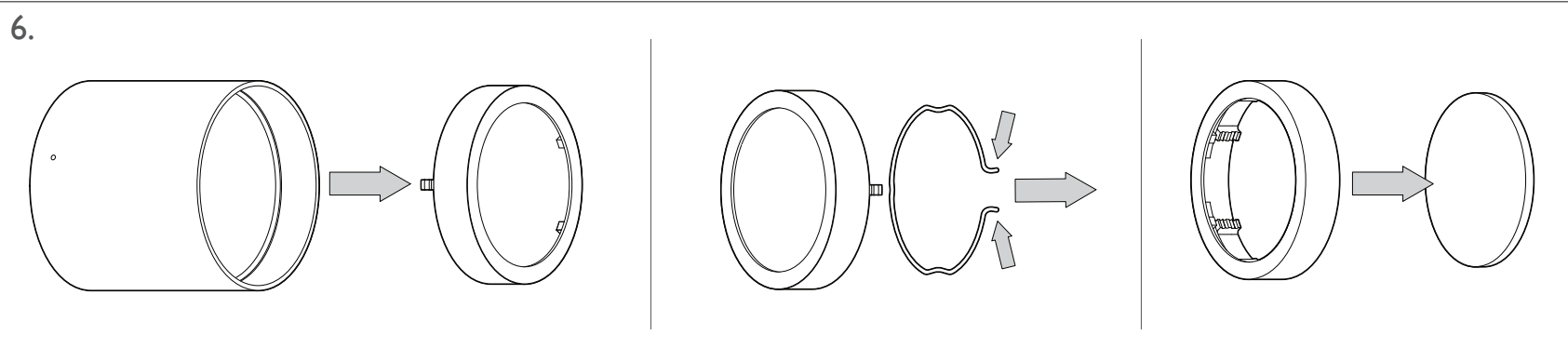
Remove snoot (step 3) and remove accessory holder from snoot.

Pinch to remove retaining clip inside accessory holder to change accessory.

When reassembling, (step 5) ensure all components are placed flat inside the accessory holder before securing accessories in place using retaining clip.

Insert accessory holder into snoot until it clicks into place.

To reattach snoot to luminaire, align snoot with thread and screw on clockwise until it stops and is secure.



precision  
by luminii

42 RIVERSIDE ROAD | LONDON | SW17 0BA | UK  
t. +44 (0) 20 8947 6616 | sales@precisionlighting.co.uk  
www.precisionlighting.co.uk  
© 2023 Precision Lighting Ltd. We reserve the right to  
change details of design, materials and finish.  
Version 10.23